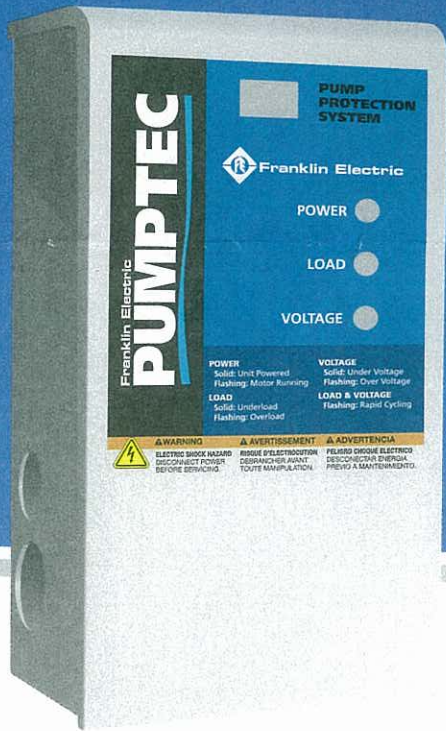


# PUMPTEC

## Replacement Cover Installation Procedure



Franklin Electric

# PUMPTEC Replacement Cover Installation Procedure

Please complete the registration card and return it, along with the old Pumptec lid, to your local Franklin Distributor.

## Tools Required:

- Flat head screwdriver
- Needle nose pliers

1. Remove power from the PUMPTEC unit.
2. Loosen lid screw and remove cover from the base (Figures 1 & 2).

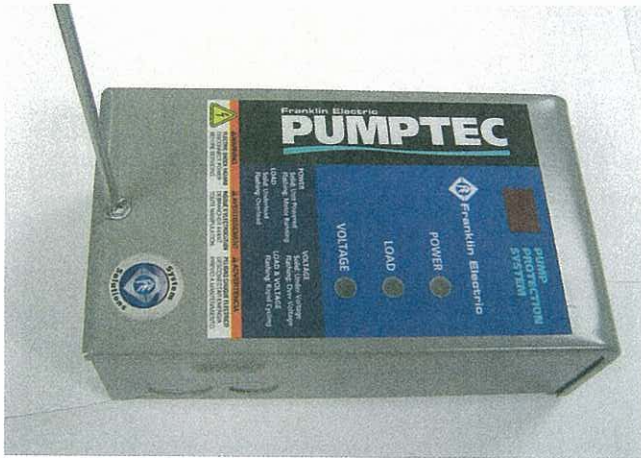


Figure 1

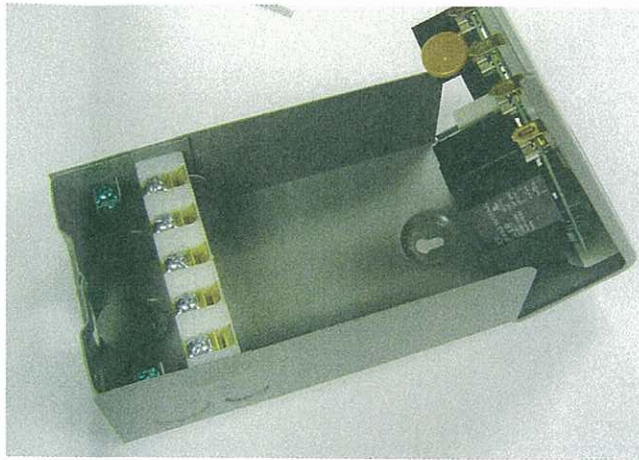


Figure 2

3. Record the settings of the underload sensitivity (e.g. 70%) and timeout (e.g. 30 minutes) adjustment knobs (Figure 3). Underload Trip Setting \_\_\_\_\_ Timeout Setting \_\_\_\_\_

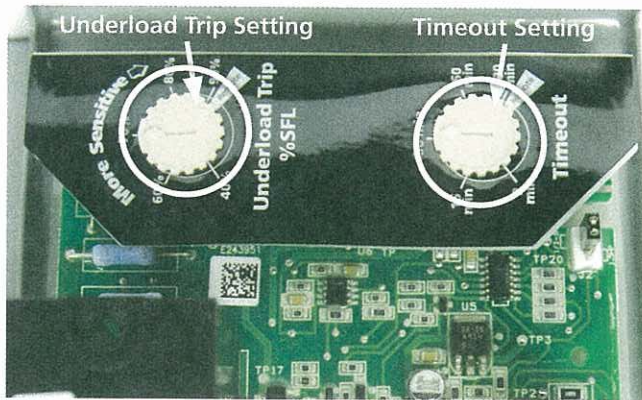


Figure 3

# PUMPTEC Replacement Cover Installation Procedure

4. Use flat head screwdriver to remove underload sensitivity and timeout adjustment knobs (Figure 4).

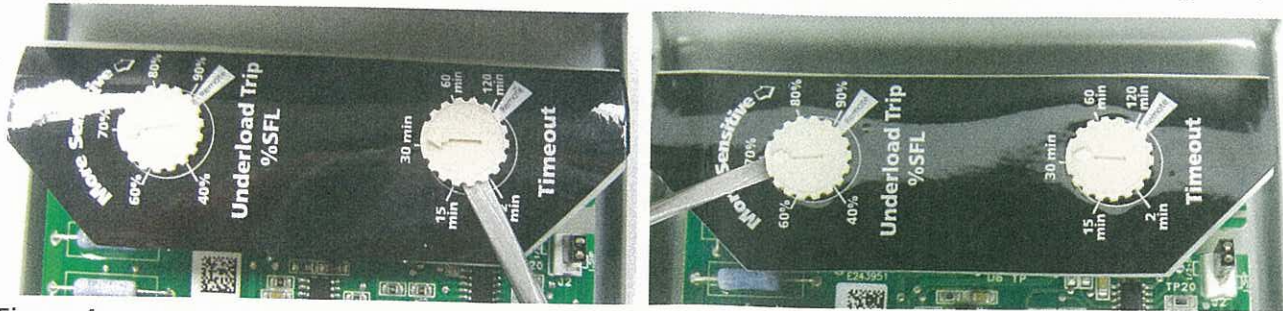


Figure 4

5. If one or both of the adjustment knobs are damaged or broken (Figure 5) while attempting to remove follow the procedure in step 9.

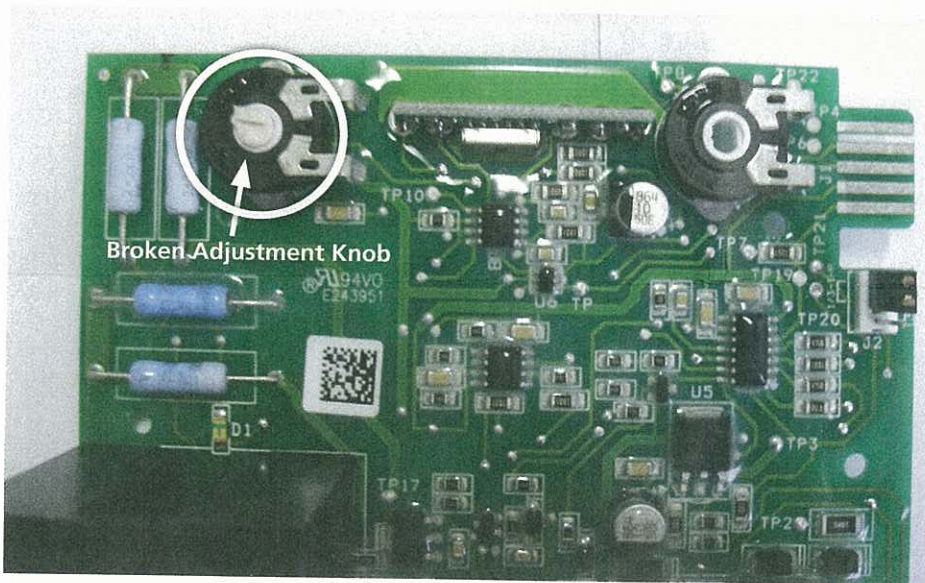


Figure 5

6. Place the flat head screwdriver between the circuit board and the terminal strip. Use a flat head screwdriver in a twisting motion to loosen circuit board from terminal strip (Figures 6, 7 & 8).

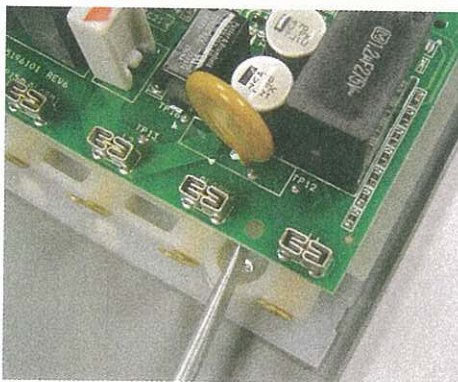


Figure 6

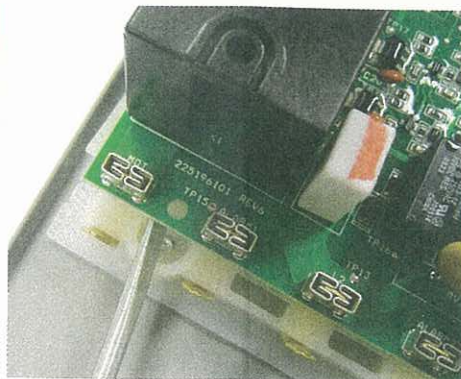


Figure 7

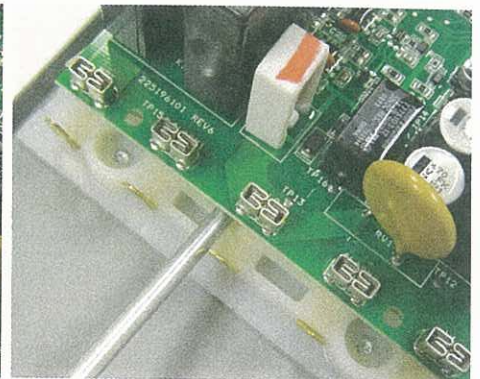


Figure 8

## PUMPTEC Replacement Cover Installation Procedure

7. Use needle nose pliers to compress the two circuit board standoff locking tabs to free circuit board from the cover. Pull on the circuit board while compressing each tab (Figures 9, 10 & 11).

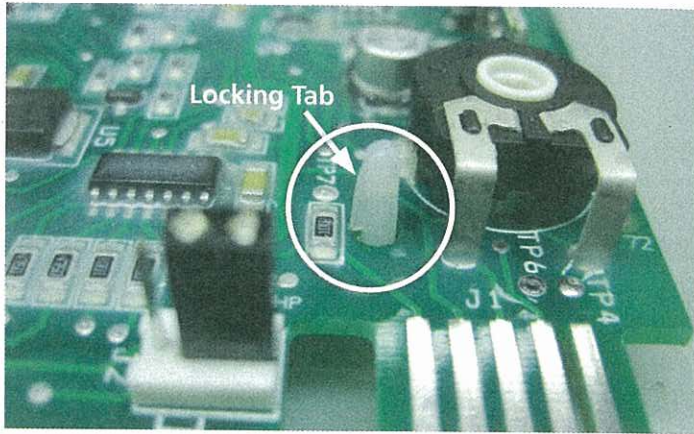


Figure 9



Figure 10

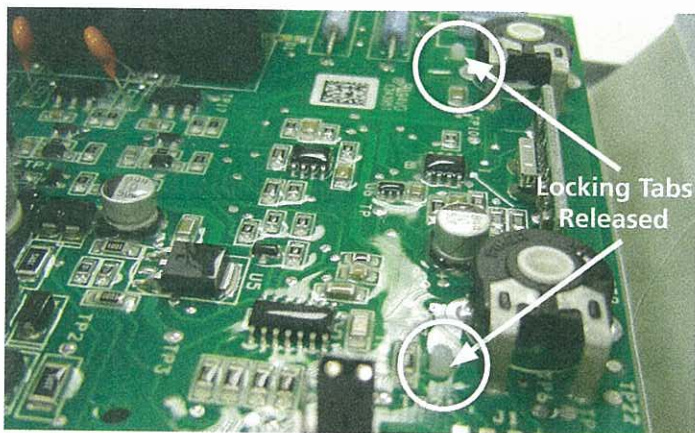


Figure 11

8. Remove circuit board from cover (Figure 12).



Figure 12

## PUMPTEC Replacement Cover Installation Procedure

9. If adjustment knobs were damaged or broken while trying to remove, then perform step 9. If the adjustment knobs were not broken, go to step 10. Flip the control board over and use the needle nose pliers to pinch together the locking tabs on the adjustment knob (Figure 13). While the locking tabs are pressed together, push the broken adjustment knob through the hole. Use the extra adjustment knobs supplied in the repair kit.

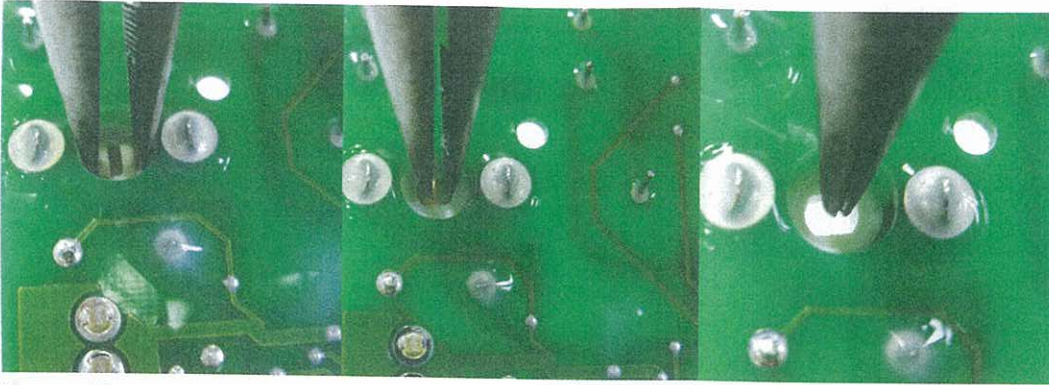


Figure 13

10. Place circuit board into the replacement cover. Align the circuit board standoff locking tabs with the holes in the circuit board (Figure 14 & 15).

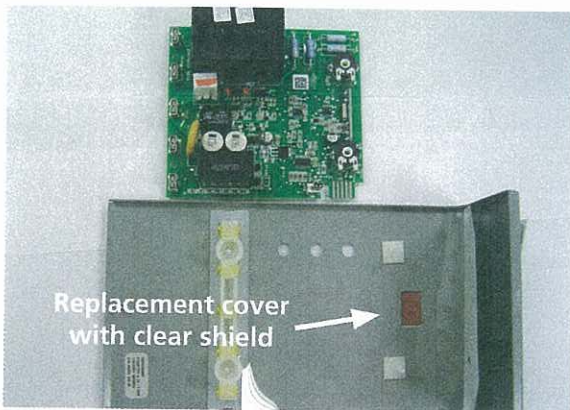


Figure 14



Figure 15

## PUMPTEC Replacement Cover Installation Procedure

11. Using thumbs, press firmly down on the ALARM 1 and ALARM 2 terminals, sliding terminals on the blades of the terminal strip (Figure 16).

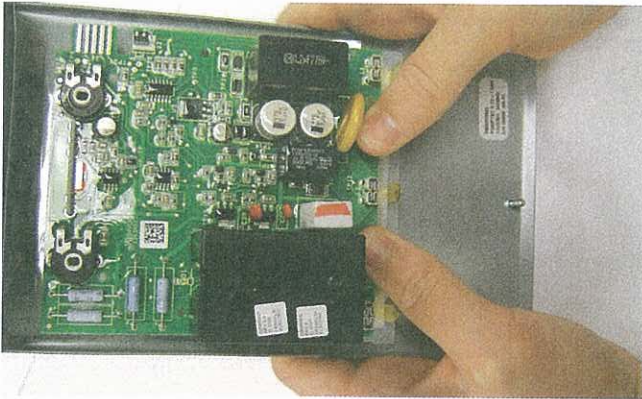


Figure 16

12. Using thumbs, press on black adjustment pots and push circuit board over standoff locking tabs (Figure 17).



Figure 17

## PUMPTEC Replacement Cover Installation Procedure

13. Fold adjustment label over adjustment pots and insert control knobs. Make sure adjustment knobs are set to the original setting (Figures 18 & 19).

**Note:** Be sure adjustment knobs point to original setting as recorded in step 3 upon insertion.

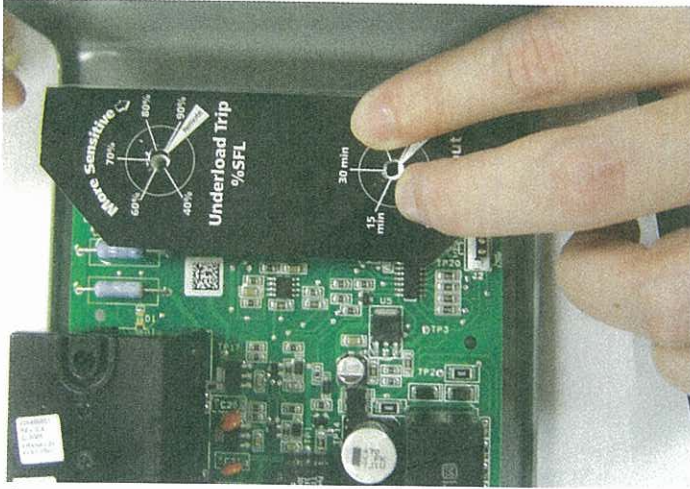


Figure 18

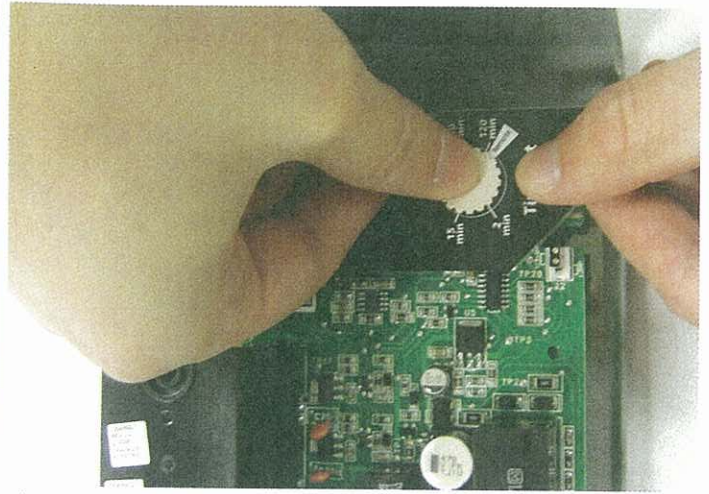


Figure 19

14. Place new cover back on to the base and secure lid screw.
15. Restore power to the PUMPTEC unit.
16. **IMPORTANT:** Please complete the registration card and return it, along with the old Pumpteck lid, to your local Franklin Distributor.



106-110 Micro Circuit  
Dandenong South  
Vic 3175  
Ph 03 9799 5000  
Fax 03 9799 5050

**TOLL FREE Ph 1300FRANKLIN**  
**TOLL FREE Fax 1300 782 855**  
**[www.franklin-electric.com.au](http://www.franklin-electric.com.au)**



**Franklin Electric**

400 East Spring Street, Bluffton, Indiana 46714  
Tel: 260.824.2900 Fax: 260.824.2909  
[www.franklin-electric.com](http://www.franklin-electric.com)